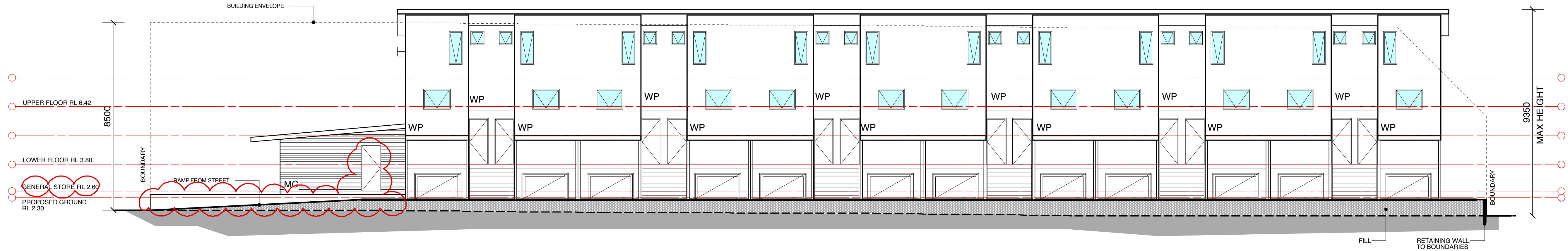
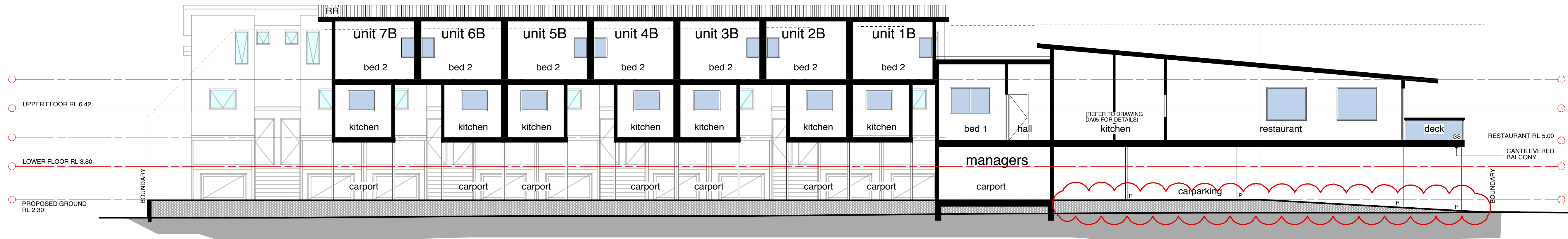


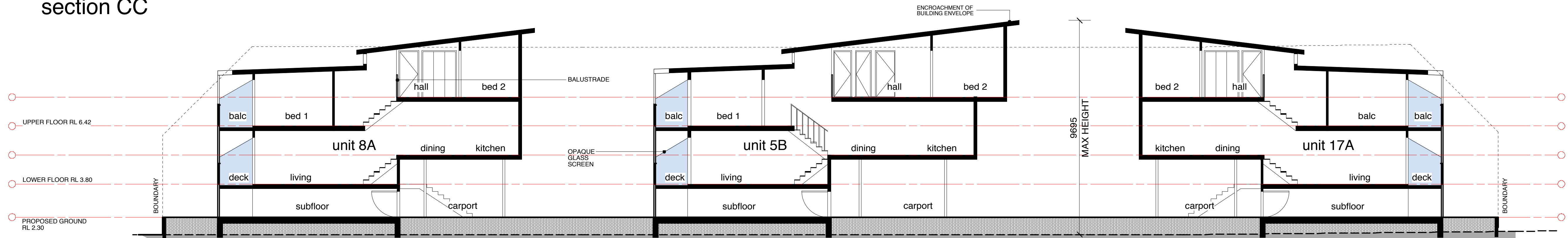
section AA



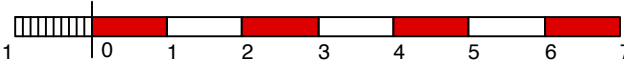
section BB



section CC



section DD



LEGEND		
MC	METAL CLADDING	
MR	METAL ROOF	
RR	RITEX ROOF	
P	POST	
WP	PAINTED WALL TECH PANEL	
GS	GLASS SCREEN	
GB	GLASS BALUSTRADE	
WB	WIRE BALUSTRADE	

REV.	DESCRIPTION	DATE
A	Deck setback revised	12/1/11
B	General store level revised and fall of ground amended.	21/2/11

Proposed Tourist Development
Bayview Batemans Bay Pty Ltd.
at 17-21 Wharf Rd Surfside

W www.aej.com.au
E aej@aej.com.au
Nominated Architect
Steven Bayar Reg. No. 5880
Tilment Pty Ltd
ABN 67 003 163 451

NOWRA
PO Box 1315
Nowra
NSW 2541
T 02 44 216 822
F 02 44 221 963

BATEMANS BAY
1 North Street
Batemans Bay
NSW 2536
T 02 44 727 388
F 02 44 221 963

WOLLONGONG
10 Belmore Street
Wollongong
NSW 2500
T 02 42 261 387
F 02 42 286 405

PROJECT #: 10-0014
DWG DATE: Jan 2011
DRAWN: CR
CHECKED: SB
SCALES: 1:100 @ A1

DA07
B